

New Mexico Discovery Guide

New Mexico - Santa Fe - 19 Pueblos

M|E|A

NEW MEXICO DISCOVERY GUIDE

We've heard from multiple sources that **New Mexico** is a most underrated state, and we concur. We hope this guide will whet your appetite to get out and explore. Or to return and rediscover.

As with many under-appreciated places in the world, we've found New Mexico to be filled with all manner of surprises of the natural, cultural, and human variety.

This guide focuses on the highlights and delights across the state, with an emphasis on the 2 hour radius surrounding Santa Fe. By no means is this everything worth knowing; it's meant to be a companion on your explorations and to share what we love about New Mexico. **MEA's Rising Circle Ranch** campus is 25 minutes southeast of downtown Santa Fe, between the towns of Lamy and Galisteo and we're prepping a second campus at the former Carmelite Retreat Center on Museum Hill in Santa Fe, next to St. John's College. Look for us to open there in 2026. Or so. Mañana is serious business here.

New Mexico is home to [19 Pueblos](#), each an independent sovereign nation. Pueblos are guided by the Pueblo Core Values of love, respect, compassion, faith, understanding, spirituality, balance, peace, and empathy.



Festivals and events in Santa Fe are convivial and sparky but rarely feel overcrowded. Trailheads are sparsely parked, and trails largely solitary. Restaurants are in enough demand that reservations are recommended but are rarely booked weeks out. Museums are world class and uncrowded. It's a perfect moment of Just Big Enough.



Well done finding your way here! We are still pinching ourselves for the great good fortune to call Santa Fe home. No need to take our word for it - [Travel + Leisure Magazine Ranked Santa Fe as the second best city in the United States.](#)





Logistics

You'll want to rent a car to experience all that Santa Fe and its environs has to offer. While there are walkable sections to enjoy, the transportation between these areas is best traversed in your own vehicle. But, you won't need to have a car while in your workshop at the Ranch.

Lodging:

We hope that you are staying with us at our Rising Circle Ranch campus, but if you are bookending a stay, there are so many good options ranging from cheap and cheerful to deepest luxury. Gah! So many good choices.

Here are a few ideas:

Luxury, Close to the plaza:

[Rosewood](#)

[The Inn of the Five Graces](#)

[La Fonda on the Plaza](#)

Mid-price, Walkable to the Plaza:

[Inn & Spa at Loretto](#)

[La Posada](#)

[Inn on the Alameda](#)

[The St Francis](#)

Walkable to the Plaza and the Railyard, cheap(ish) and cheerful:

[Santa Fe Motel and Inn](#)

[The Parador](#)



Not walkable to anything but the locally beloved burrito shop El Parasol across the street, but with a good bar, cool design-y old motor court. Plenty of parking. Might be a bit edgy. Budget- ish.

[El Rey Court](#)

Luxury- If you love Japan, hot tubs and being a short drive up out of town, try [Ten Thousand Waves](#).

Luxury, for Groups in Santa Fe:

This entire [5 bedroom, well-located compound](#) downtown.

[Bishop's Lodge](#) has a [12 bedroom bunkhouse that sleeps 24 adults](#). Not cheap, but gorgeous.

Luxury in Albuquerque [Los Poblanos](#)

Historic Inn and Organic Farm in Los Ranchos de Albuquerque.

Medical:

Presbyterian Hospital and Christus St Vincent are both located in Santa Fe. There are also several highly rated urgent care centers, including [Railyard Urgent Care](#) - which has won the award for Best Urgent Care in Santa Fe for eight years running. So there's that.





Dining

Santa Fe is a dining mecca. You already knew this, didn't you?

You'll likely be asked [red or green](#) at least once on your trip to NM. They are asking for your chile choice. I recommend always answering Christmas, which will result in a half green and half red beauty, allowing for instantaneous taste tests.

Narrowing down restaurants is almost impossible, so we will endeavor to list the spots you might miss otherwise. You'll find [all the fine dining standard bearers covered by Conde Nast here](#). For the record, we agree with their selections!

Some super valuable foodie resources are The Santa Fe Reporter's [The Fork](#), the pithiest food writing we've seen in a good, long time. Additionally, [Santa Fe Foodies](#), is a kind and earnest (and crazy thorough) online space with a [very active Facebook group](#) of +30K members, all with opinions, for the most part wielded kindly. This alone is worth joining to witness. Rare.

Here are a few of our favorites that you won't find on many lists:



[Jesushi](#) - Jesus makes sushi in his food truck at a carwash. We shit you not.

[El Chile Toreado](#) - James Beard award winning food truck

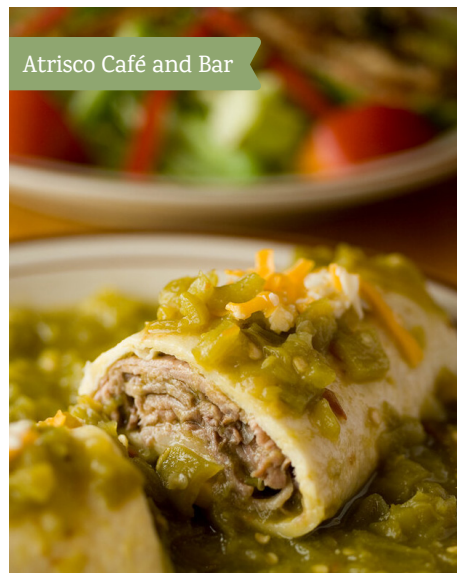
[Tender Fire Pizza](#) check Instagram to learn where Chef Ben, (who has come to Baja and cooked pizza with our beloved Chef Tony) and his team are popping up. They threaten to open a brick and mortar but for now are seasonal and mobile.

[Tune Up Cafe](#) - super unpretentious local hang

[Bruno's](#) - real, thin, East Coast style pizza. Trust me, I went primary source on all the pizza research. It's a truck, it's outside, and it's delicious. I have a local's card. Quirky hours, check ahead.

[Atrisco Café and Bar](#) - it's in a mall. And it's super good.

[Vinaigrette](#) - you'd probably find this one on your own, but it's such a staff favorite I had to list it.





Shop Healthy

Santa Fe runs the gamut from Whole Foods to Trader Joes to Natural Grocers to Sprouts to the very local [La Montañita Coop](#). You needn't go hungry here or miss any of your favorite specialty items. Check out NM Picnic in the CHOMP food hall for a gorgeous array of cheeses and specialty items.





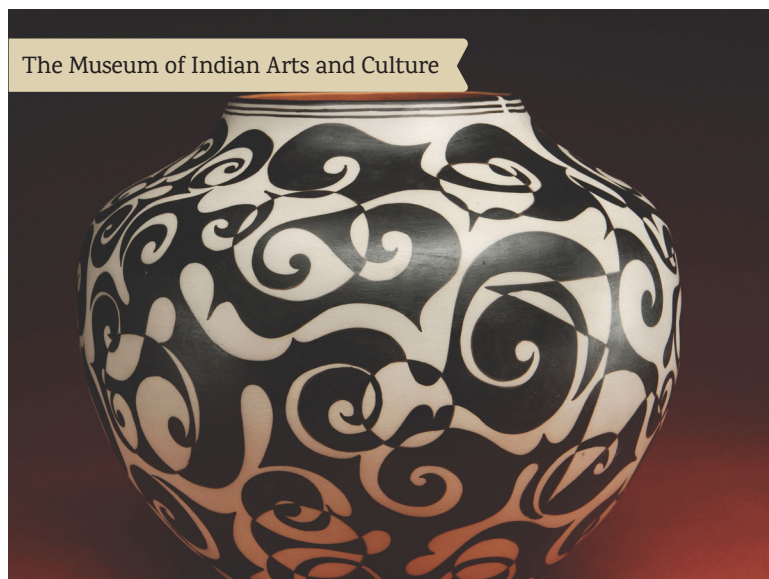
Be a Culture Vulture

[Museum Hill](#) is home to multiple well-done museums, the botanical garden, and the future home of MEA's intown campus. We recommend [joining the Museum of New Mexico Foundation](#). Cheap as chips, supports a great cause, and grants free, unlimited admission for one year to [four state museums](#) in Santa Fe (including the Vlodem Contemporary) and [seven of the eight historic sites](#) statewide

You'll find these four standout museums on Museum Hill:

[The Museum of Indian Arts and Culture](#) - This where the award winning and groundbreaking exhibit [Grounded in Clay: The Spirit of Pueblo Pottery](#) opened before touring the world. This was one of my favorite, if not my favorite museum installation ever - it's the only time I've been kicked out of a museum; closing time just crept up on me. "The museum's close work with Native communities ensures that the visitor experience is authentic, culturally sensitive and inspired by the beauty and power of Native art, language, ritual and other cherished expressions of daily life."

[Museum of international Folk Art](#) was founded in 1953 and is dedicated to the principle that craft is an international language that can bridge divides between cultures. The Girard Wing is a celebration of one man's dedication to collecting and elevating folk art the world over.



[The Museum of Spanish Colonial Art](#) showcases the cultural heritage of Hispanic New Mexico and its living traditions and is an instrumental part of producing the annual Traditional Spanish Arts Market.

[The Wheelwright Museum of the American Indian](#) is the oldest, independent, non-profit museum in New Mexico, founded in 1937 as a collaboration between a wealthy Bostoner and a Diné elder to preserve and celebrate disappearing traditions and ways.

[The Santa Fe Botanical Garden](#) is located directly across the street from the four museums. It sits on an arroyo that contains a beautiful and well traveled walking path that leads back up to MEA's to-be-opened Santa Fe campus.

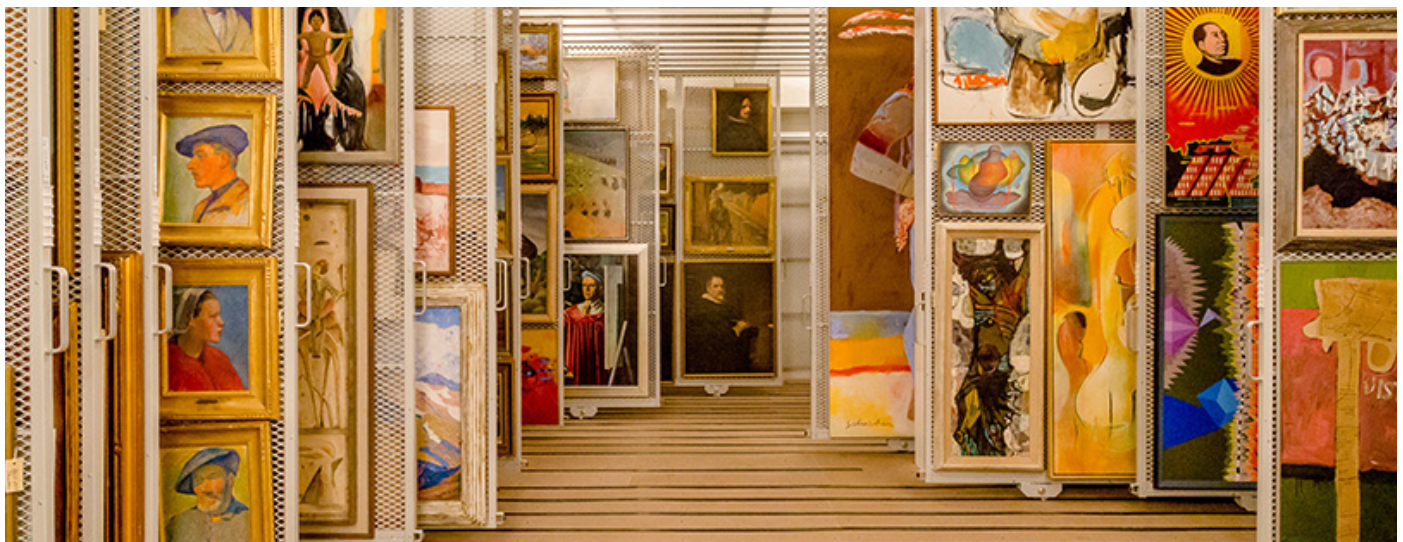
Other arts and cultural activities:

[The Santa Fe Children's Museum](#) is highly recommended by our co-founder Jeff Hamaoui and his kiddos Blue and Gray.

[Site Santa Fe](#) - Free contemporary arts space in the Railyard District.

[El Rancho Las Golondrinas](#) - a living history museum

[Glassblowing Class with Cia](#) - a don't miss experience. Book now!



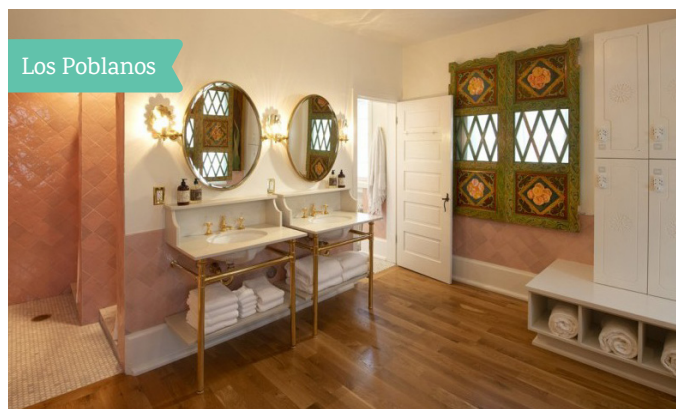
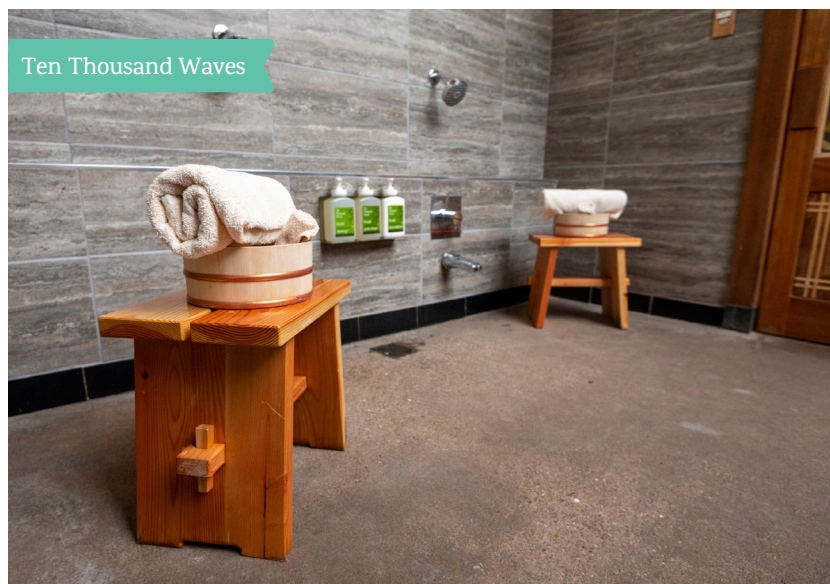


Breathe Deeply

[Ten Thousand Waves](#)- Japanese style health spa with cute lodging, hot tubs, an incredible restaurant Izanami and is perhaps the real reason Chip cast his vote for Santa Fe to be our first US location.

[Los Poblanos](#) in Ranchos de Albuquerque, a scant hour from Santa Fe and MEA's Rising Circle Ranch, and set in 25 acres of lavender fields, is pitch perfect. From the spa to the retail to the food (make a reservation at El Campo, even if staying on property) perfect. It's a don't miss.

[BODY](#) Beautiful spa, gorgeous movement space with top notch classes, and a well-curated retail operation. Easy to access location and conveniently located in the same building as a terrific french pastry shop and restaurant, [Clafoutis](#). Balance!





Walking and Hiking

And much more! Walking and Hiking and Fishing and Rafting and Skiing and Biking, oh my!

[The Galisteo Basin Preserve](#) - the largest private, open to the public trail system in the US. You can download the map before you head out. Strongly recommend.

[Ski Santa Fe](#) - surprisingly good ski hill with a generous uphill policy.

[Dale Ball Trails](#)- 25 miles of interconnected trails wrapping around Santa Fe.

[Shiprock](#) - Sacred desert formation.

[River Rafting](#)

Fly Fishing - We have found [The Reel Life](#) to have excellent guides and are generous with information. Conveniently located next to an [outrageous used bookstore](#).

[Bandelier National Monument](#)

[Chaco Canyon](#)

Fraternize and Shop with Santa Fe Locals

Don't miss the [Farmers' Market](#) on Saturdays and Tuesdays at the Railyard. Great for snagging the freshest veggies, breakfast burritos and pupusas, and the very best people watching.

The Galisteo Basin Preserve



Ski Santa Fe



River Rafting





Festivals and Markets for Everyone

[Various Pueblo Feast Days](#)

[Santa Fe Film Festival](#) - February

[Santa Fe Literary Festival](#) (on the same weekend as our Homecoming/Grand Opening in May 2024)

[Santa Fe Summer Scene](#) - free music in various locations in downtown Santa Fe. Visit the MEA Wisdom Booth! (maybe?)

[International Folk Art Market](#) - July

[Spanish Market](#) - July

[Santa Fe Indian Market](#) - August

[Santa Fe Fiestas](#) - September

[The Burning of Zozobra](#) - September

[Wine and Chile Fiesta](#) - September

[Albuquerque International Balloon Fiesta](#) - October

[Santa Fe International Film Fest](#) - October

[Canyon Road Farolito Walk](#) - Christmas Eve



Books

The books that will help you set the stage:

[Read these](#) and also these:

[The Border Trilogy](#) I was told if I was going to live in NM I would need to read these books by Cormac McCarthy. Dark, brah.

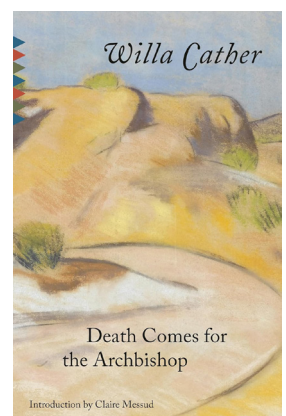
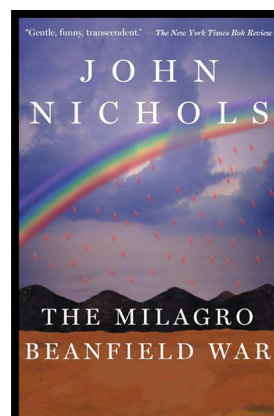
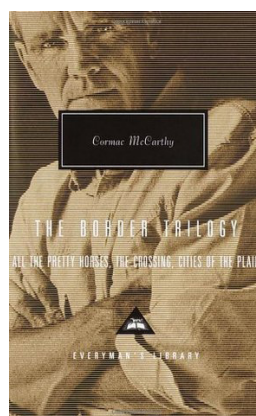
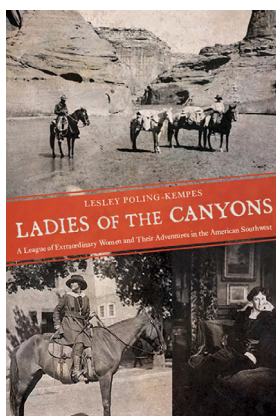
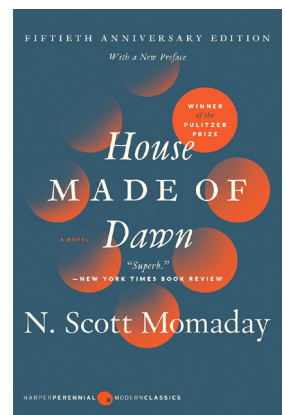
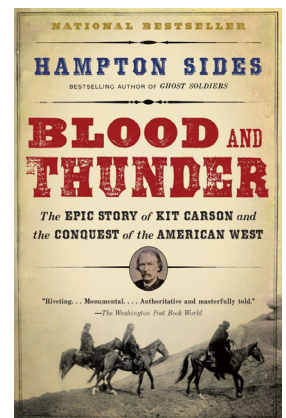
[Blood and Thunder](#), Hampton Sides

[Ladies of the Canyons. A League of Extraordinary Women and Their Adventures in the American Southwest](#), Lesley Poling Kempes

[House Made of Dawn](#), N. Scott Momaday

[The Milagro Beanfield War](#), John Nichols

[Death Comes for the Archbishop](#), Willa Cather





Background for the history hounds

As one dives into the history of the area, one filled with layers of conquest and trauma, that NM human warmth and welcome becomes even more treasured. [New Mexico has a complicated history](#), and we hope to be a good neighbor, sensitive to wounds that are still very real. Of course, Santa Fe is not alone in being politically polarized; though the veil between past and present feels particularly thin here. We found [this podcast](#) called Monuments and focused on the controversy around the Soldier's Obelisk to be a helpful explainer.

Love the adobe look of Santa Fe? Here is a [podcast](#) from 99% Invisible for the architecture and culture fans. Super interesting.





Things to do: Top Ten

In Sum, The Top Ten Things To Do In Santa Fe

1. Walk Canyon Road
2. Linger in the Plaza and poke around downtown
3. Hike the Galisteo Basin Preserve
4. Take a day trip down the Turquoise Trail or up to Taos on the High Road
5. Museum your face off on Museum Hill.
Don't miss [the cafe](#) in the courtyard, so good.
6. Ride the Sky Railway
7. Go to the opera; dress up and bring a deluxe picnic dinner
8. Book a few days at the inn or a few hours at the spa at Ten Thousand Waves
9. Spend a summer Saturday morning at the Farmers' Market
10. Plan an epic land art tour and visit all the greats (see below)



Too interesting to ignore:

[Bosque Del Apache National Wildlife Center](#) - the [Festival of the Cranes](#) celebrating the return of the Sandhill Cranes. A pathway to awe.

Otherworldly New Mexico Land Art:

[The Dwan Light Sanctuary](#) - [Atlas Obscura](#) says about this installation at the United World College (MEA is proud to collaborate with UWC) “A futuristic temple of light uses prisms and rainbows to create an atmosphere of peace.”



[Star Axis](#) - conceived in 1971, ground broken in 1976 –planned opening in 2026!

Star Axis is an architectonic earth/star sculpture constructed with the geometry of the stars. Created by artist Charles Ross, all of Star Axis's shapes and angles are determined by earth-to-star alignments. They are built into the sculpture so that we can experience them in human scale. Star Axis offers an intimate experience of how the earth's environment extends into the space of the stars. The approach to building Star Axis involves gathering a variety of star alignments occurring in different time scales and allowing them to form the architecture. The sculpture's name refers to its primary earth-to-star alignment: it is precisely aligned with Earth's axis, which now points toward our north star Polaris. Charles Ross's artwork is about light, time, and planetary motion. Star Axis is his largest project. It was conceived in 1971, and after a four-year search throughout the southwest, Ross broke ground in 1976. Star Axis is presently being constructed on a mesa in New Mexico. Built with granite and sandstone, at its outside dimensions, Star Axis is 11 stories high and 1/10th of a mile across.

[The Lightning Field](#) - open May through October, bookings for visits opens Feb 1. The Lightning Field (1977), by the American sculptor Walter De Maria, is a work of Land Art situated in a remote area of the high desert of western New Mexico. It is comprised of 400 polished stainless-steel poles installed in a grid array measuring one mile by one kilometer. The poles—two inches in diameter and averaging 20 feet, 7½ inches in height—are spaced 220 feet apart and have solid, pointed tips that define a horizontal plane.



A sculpture to be walked in as well as viewed, The Lightning Field is intended to be experienced over an extended period of time. A full experience of The Lightning Field does not depend upon the occurrence of lightning, and visitors are encouraged to spend as much time as possible in the field, especially during sunset and sunrise. In order to provide this opportunity, Dia offers overnight visits during the months of May through October. You could combine this trip with a visit to Pie Town, famous for, well, pie. And a Pie Festival.

Further South yet:

Our founder Chip Conley's favorite spot in New Mexico is the [White Sands National Park](#) near where the first atomic bomb was tested. It's especially hypnotic at sunset.



[Gila Cliff Dwelling National Monument](#) and National Forest

[Carlsbad Caverns National Park](#)

[Truth or Consequences](#) for hot springs

[Cumbres & Toltec Scenic Railway](#) begins in Chama, a beautiful three hour drive from Santa Fe.

The Cumbres & Toltec Scenic Railroad is a National Historic Landmark. At 64-miles in length, it is the longest, the highest, and most authentic steam railroad in North America, traveling through some of the most spectacular scenery in the Rocky Mountain West. Owned by the states of Colorado and New Mexico, the train crosses state borders 11 times, zigzagging along canyon walls, burrowing through two tunnels, and steaming over 137-foot Cascade



Trestle. All trains steam along through deep forests of aspens and evergreens, across high plains filled with wildflowers, and through a rocky gorge of remarkable geologic formations. Deer, antelope, elk, fox, eagles and even bear are frequently spotted on this family friendly, off-the grid adventure.

For the Hardest of Hardcore

[The Great Divide Mountain Bike Route](#) From Antelope Wells, NM to Alberta, Canada. 3083.8 miles.

Some suggested itineraries:

Christine's Perfectly Slow Paced, yet Ambitious, Day in Santa Fe

Late breakfast at the Teahouse on Canyon Road. Slow walk Canyon all the way to the Plaza. This should take a few hours. Jump on the [Loretto Trolley](#) for the best hour-plus orientation of Santa Fe one could hope for. Upon return, grab a cappuccino and a biscochito at [The French Bakery Shop](#) and enjoy it in the plaza. Pop up to Shiprock and take in the rug room. You have your choice of shops, museums and cathedrals to explore - I recommend doing so aimlessly. Native American artists set up shop under the portal at the [Palace of the Governors](#), which dates to 1610 and is the oldest public building in continuous use in the United States. Head to The Shed at 4:00 PM and put your name on the waitlist for dinner and then head home to prep for your evening. Have a margarita at the Rosewood bar and walk back to The Shed for dinner. If you are up for more after dinner, head to tiny La Copita on Guadalupe behind La Esquina for a nightcap, or if on foot, see if you can find tiny [Tonic](#) nestled next to Cafe Pasquals.



Christine's Perfectly Overbooked One Day (two or more if you can stretch it out!) Road Trip

Begin in Santa Fe, take the backroad to [Chimayó](#) and visit the [sanctuary](#), rumored to hold miraculous healing dirt. Then continue with the highroad to Taos, slowly. Stop at [Sugar Nymphs](#) for food and coffee; onto Taos (if you can spare more days, stop here for a day or two, and see the Taos suggestions in the Taos section). Visit the plaza, grab lunch at [Manzanita Market](#), and then head to the Rio Grande Gorge Bridge and be sure to park and walk out to the middle. Follow the loop back around to Santa Fe, keeping your eyes open for lowriders in Española - the home of lowrider culture, and straight to dinner at the unassuming but locally beloved New Mexican food at [Atrisco Cafe](#). Home to bed!



The Turquoise Trail Ramble

Start in tiny Los Cerrillos just off Highway 14 - also known as the Turquoise Trail. Be sure to start your visit at [Casa Grande Trading Post](#) at the end of the road with a view over The [Cerrillos Hills State Park](#). Poke around the dusty street for a bit and wind up at [The Black Bird Saloon](#) - but be sure to check the schedule before you set your heart on lunch there. Be sure to save some space for ice cream during your trip back in time to funky [Madrid](#), just down the road. Enjoy the ride between these two towns - the views are gorgeous, the road fun to drive, and there are sculpture

gardens to be discovered on the way. Madrid has interesting shops to explore and is the home of the quirky [Mine Shaft Tavern](#) - which often hosts live music. Be sure to check the Madrid town calendar as they seem to celebrate a lot, and love a good parade. Take your time on the drive back to Santa Fe or end up further south at [Los Poblanos](#) Historic Inn and Organic Farm in Los Ranchos de Albuquerque. Set on a lavender farm with an incredible restaurant and spa on site - we are all huge fans of this place. Be sure to make a reservation to dine onsite.



OR

Christine's Super Jock Day!

Head to Ski Santa Fe, skin up, ski down, take chair laps; hustle down midday, grab your mountain bike, head to the Galisteo Basin Preserve and ride until just before sunset. Dinner at [The Blackbird Saloon](#) in Cerrillos (check if they are open first!). Didn't bring your mountain bike? Summit [Atalaya Mountain](#) or [Picacho Peak](#) and grab dinner at [Sweetwater Harvest Kitchen](#). You'll have earned the chocolate mousse.

I want to see an entirely different side of Santa Fe:

The [Sky Railway](#) Adventure Train, a brainchild of George RR Martin and MEA alum Catherine Oppenheimer offers scenic multi-hour day and evening train tours from the Railyard in Santa Fe to historic Lamy, NM at the northern edge of the MEA Ranch property. From historic tours to margaritas, sunset tours and live music - Sky Railway has it going on. Check the calendar as the schedule varies and be sure to book ahead.



I need to chill Santa Fe Day.

[Ten Thousand Waves](#) is a small miracle; a tiny slice of Japan nestled in the pine forest a few miles above downtown Santa Fe. Make a day of it like this: Start with breakfast at the delicious Dolina Restaurant. The parking is terrible but the food makes up for it. Drive up towards The Waves, as you may hear locals call it, but stop at the Dale Ball Trailhead on Hyde Park Road and take a hike, walking off some of your decadent breakfast. Post hike, head straight to Ten Thousand Waves for your spa and soak. If you are really sending it, you've booked into the lodging here for a night or two. Don't miss dinner at Izanami, the inhouse restaurant. You'll be a whole new person after some time here.

(Let's have a map here with these main locations marked.)

Orient yourself in Santa Fe and Northern New Mexico

The Plaza is the center of old town. Restaurants, elevated shopping, strolling, live music, open air artisan markets, museums, lowriders, churches, parks, the Convention Center, it's all here.

The Railyard is a redeveloped arts and social region with a rail trail. The Farmer's Market is here, as is the George RR Martin-owned [Jean Cocteau Cinema](#), [Beastly Books](#) and [Sky Railway](#). The (undeservingly) controversial [Vladem Contemporary](#) is also found here.

Canyon Road is a mile-long adobe stroll lined with galleries and a few notable restaurants - The Compound, The Tea House, Geronimo and El Farol, which is mainly known for its flamenco show and staying power. [Upaya Zen Center](#), home to the renowned Roshi Joan Halifax, is located just up from Canyon Road and the regular 5:30 pm Wednesday Dharma Talks can be accessed by a leafy trail through a neighborhood along the Santa Fe River. Or you can drive. East Alameda Street parallels Canyon Road and is a golden tunnel in the fall.



Museum Hill

Lena Street Lofts/ 2nd Street - small, quietly environmentally innovative, redeveloped community of makers and creatives, coffee shops and retail. [Living Threads Studio](#), is a world class gathering space filled with responsibly sourced indulgences and inspiration. [Bread Shop](#) and tiny [Ozu](#) will keep you well fed. It seems that ceramists have agreed to nest here together. [Green River Pottery](#) is a gallery featuring the work of Theo Helmstadter, the attached studio has a strong teaching focus - the classes are highly recommended. [Studio Nia Santa Fe](#) is very close by, and adored by (and taught by) more than a few local MEA alums.

[Meow Wolf](#) While technically in Santa Fe, this place is on its own planet. Located in an old bowling alley off Cerrillos Road. These creatives invented the experiential art genre and nudged the whole art world right here in Santa Fe. *have asked Corvas for a quote to include here, as an MEA alum who is one of the MW founders. Waiting.



And an entirely different way of orienting oneself in Santa Fe. Download the [Margarita Trail App](#).

Looking North:

Tesuque is the leafy enclave to the north of Santa Fe, home of the [Tesuque Village Market](#), which is one of those pilgrimage restaurants with often terrible, yet somehow endearing service that still ends up being fun. [The Santa Fe Opera](#), which operates from late June through late August, is a can't miss, and also found up this way.

Abiquiu - about an hour north of Santa Fe; the home of [The Georgia O'Keeffe Home](#) (make a reservation well in advance) and Ghost Ranch. Often referred to as Georgia O'Keeffe country, but worth noting the intrinsic yet unintended disrespect to the original inhabitants of the area. Nearby is [Monastery of Christ in the Desert](#), a welcoming retreat along the banks of the gorgeous Chama River. Also notable, especially for foodies, is the new [NOSA Restaurant and Inn](#). Reservations are mandatory and the food is getting rave reviews.



Chimayo - small town on the [high road to Taos](#) famous for the familial weaving traditions, a [small adobe mission pilgrimage site housing miraculous healing dirt](#), and the destination restaurant [Rancho Chimayo](#).

Taos - home to the continuously occupied for 1000 years [Taos Pueblo](#), Taos Ski Valley, wonderful restaurants and museums, including the [Taos Art Museum at Fehin House](#) and the critically acclaimed [Harwood Museum of Art](#). [Ram Dass's NM ashram home](#) is open to the public for respectful visits; the guidelines are available on the website. [The Love Apple](#) is a foodie dinner must. New Mexico was a hotbed of alternative and experimental living in the 1960's; Taos was home to many of the intentional communities and communes. Visit the [Earthships](#), a carryover into present day from that idealistic era, drive out to the [Rio Grande Gorge Bridge](#) and then stop and soak, eat and/or stay at [Ojo Caliente](#), "Hot Eye", apparently named for the many ancient footpaths leading to the springs that resembled eyelashes from above.



Southward bound

MEA's Rising Circle Ranch campus is located about 25 minutes south of the Plaza between the historic towns of Lamy and Galisteo. We are thrilled to be neighbors with the [Galisteo Basin Preserve](#), a visionary non-profit community development with one of the largest privately owned, open to the public, trail networks in the country.

The Turquoise Trail - this meandering road heading south from the ranch will take you through Galisteo, then onto the tiny town of Cerrillos and [The Blackbird Saloon](#), and then to the hard-to-describe-so-you-ought-to-just-visit Madrid (say Maaadrid, not Madriiid)

Galisteo - a purely residential (read, not even a coffee shop) adobe stronghold of about 250 people, four miles south of our front gate. Strangely artistically prolific, currently home to [Judy Tuwalstiwa](#), [Bruce Nauman](#), [Lucy Lippard](#) and many more. [Agnes Martin](#) once called Galisteo home. In the corridor between Rising Circle and Galisteo, you'll find [The Light Institute](#) of Shirley MacLaine's past life regression fame and the [Chi Center](#), home to one of our favorite neighbors, the delightful Mingtong. Learn Qigong or visit the Grandmother and Grandfather trees. We hope this gives you the impetus to begin your New Mexico explorations - there is so much more than we could ever capture here. We truly can't imagine it will remain a secret for long.



